



Majestic

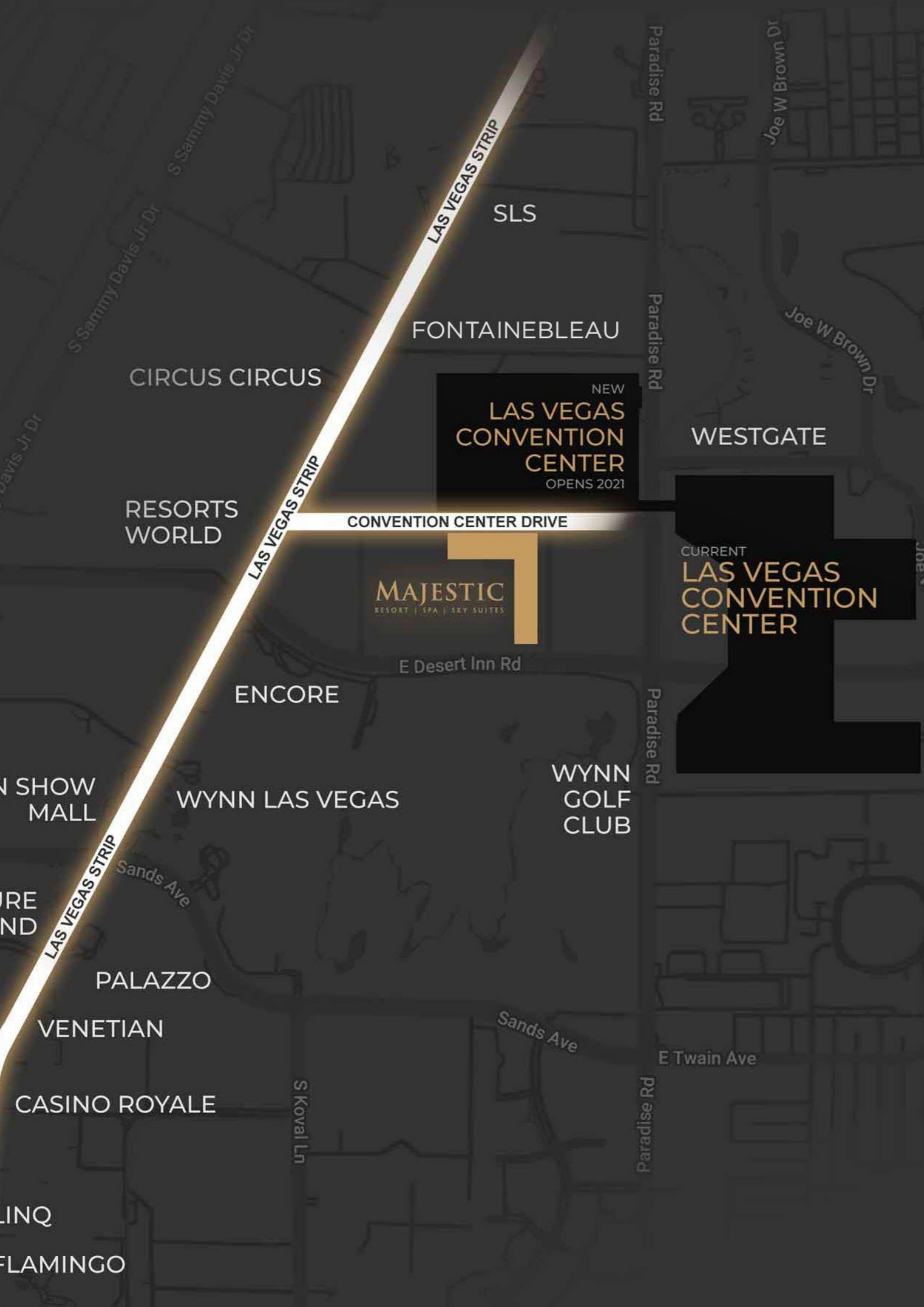
Las Vegas



Las Vegas

Majestic Resort & Spa and Plaza

Nestled on six acres opposite the new Las Vegas Convention Center, and just two blocks from the renowned Las Vegas Strip and the Sphere, Majestic Plaza features 7 world-class restaurants and live entertainment. The hotel embodies Zen-inspired tranquility with natural elements, maximizing natural light and embracing a modern Art Deco style inspired by architect Paul R. Williams, creating a timeless atmosphere of elegance and sophistication.



The Las Vegas Location



Located on over six acres directly across from the all new Las Vegas Convention Center & Tesla Tunnel, and just two blocks from the famed Las Vegas Strip.



Majestic

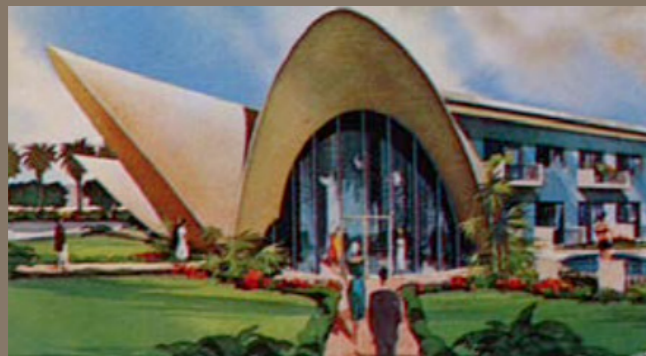
LAS VEGAS & THE DOUMANI LEGACY

Six Decades of History

Lorenzo Doumani, a native of Las Vegas and heir to a prominent hospitality legacy, launched his career in iconic family-owned motels. Under the mentorship of industry pioneers like Jay Sarno and Steve Wynn, he founded Majestic Resorts in 2000, focusing on revitalizing historic Las Vegas properties and overseeing significant transactions. Doumani's dedication to innovation defines his ongoing impact in luxury hospitality. Experience Lorenzo Doumani's latest achievement: Majestic Las Vegas, a groundbreaking \$850 million resort that harmonizes modern luxury with the city's rich heritage, setting a new standard of sophistication on the Strip.



La Concha



Architect Paul R Williams (1960)

El Morocco



Architect Paul R Williams (1963)

Tropicana



(1975)

Peppermill

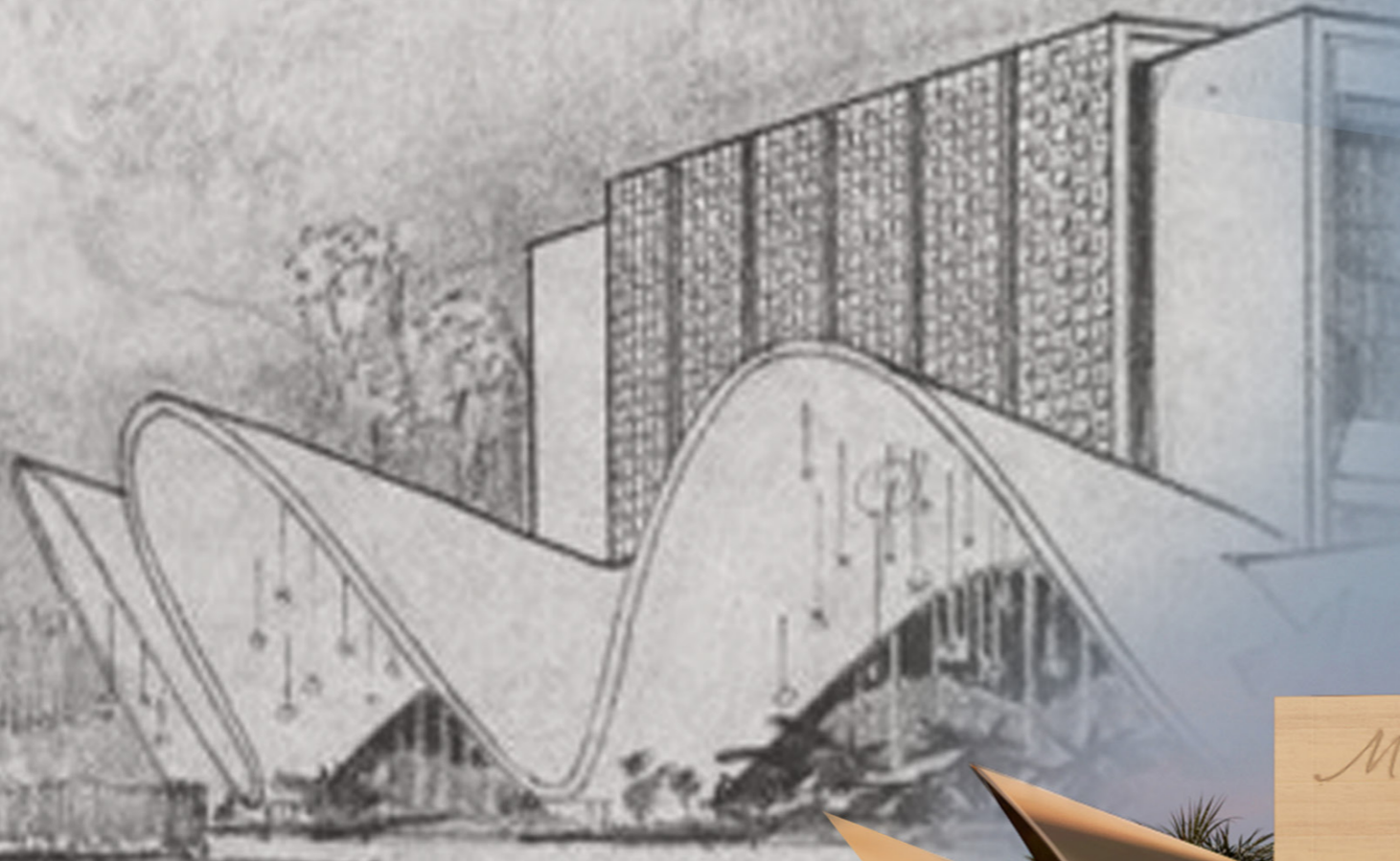


(1972)





Honoring the Past. Defining the Future



Majestic

RIVERVIEW
EAST VALLEY



Majestic

All-Suite Five Star Hotel

Be welcomed by a different kind of Vegas.
No casino. No smoke. No noise. No hassle.
Only white gloved service and timeless contemporary elegance
befitting the discerning traveler who expects the very best.

604 SUITE 5-STAR HOTEL

NON-SMOKING

NON-GAMING

THE CLUB AT THE POOL

Opulent cabanas overlooking the Las Vegas Strip

THE MEETING PLACE

Lobby Bar, Lounge & Library with live entertainment



Porte Cochere

LUXURY

EXCLUSIVE

EXPERIENCE

Majestic



Porte Cochere

SOPHISTICATED

OPULENCE

REFINED

Majestic



Majestic Plaza

MODERN

FUSION

LUXURY

Majestic



Majestic Plaza

CONTEMPORARY

PANORAMIC

TECHNOLOGY

Majestic



Pool Area

TRANQUILITY

SERENETY

LUXURY

Majestic



Pool Area

VIBRANT

VIVACIOUS

EXUBERANT

Majestic



Majestic

WESTGATE

Majestic



Majestic

SLS

Encore

Majestic

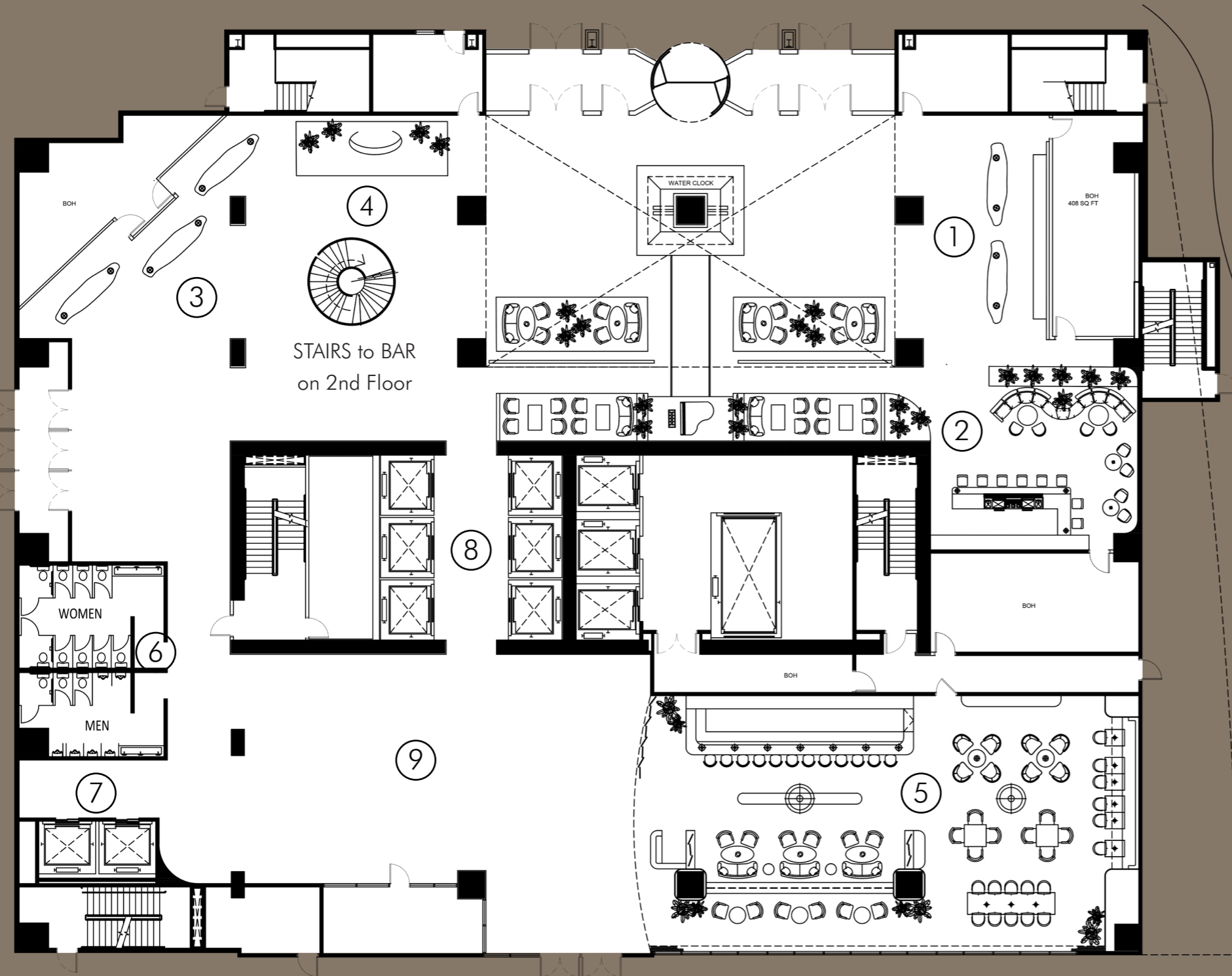
Majestic



Majestic

Majestic

Majestic



KEY LEGEND

- ① Main Entrance & Reception (2 desks)
- ② Piano Bar
- ③ Group Check in (3 desks)
- ④ VIP Check in
- ⑤ Library Bar
- ⑥ Toilets
- ⑦ Lifts to Guest Floors & Amenities
- ⑧ Lifts to Parking Lot
- ⑨ Possible Location for Coffee Shop / Kiosk

Floor Plan

GROUND FLOOR

Majestic



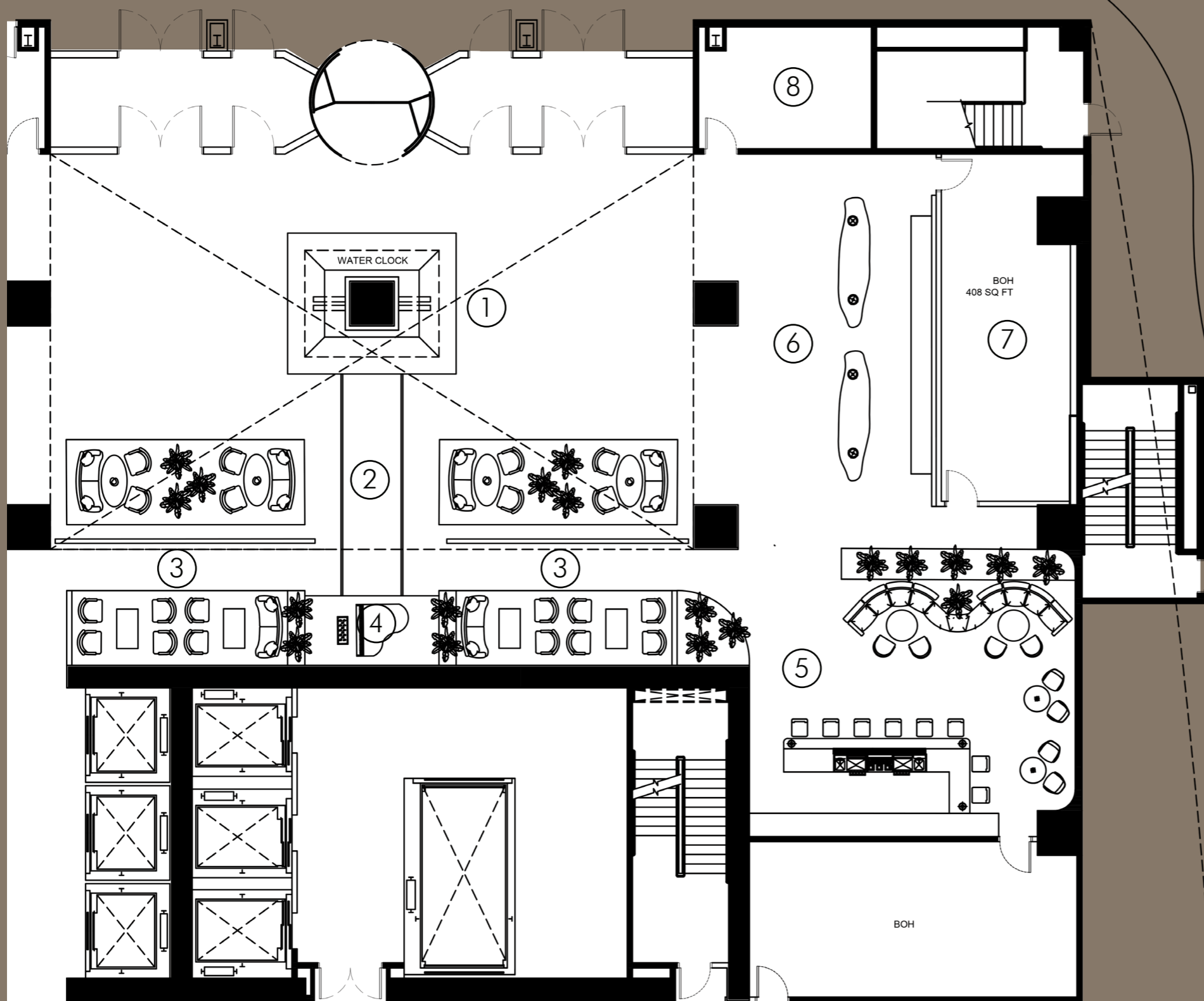
Lobby | Piano Bar

DETAILED

RELAXED

REFINED FINISH

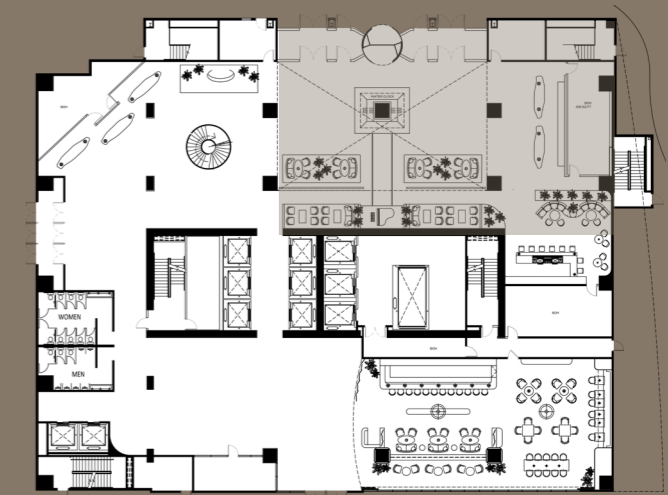
Majestic



KEY LEGEND

- ① Water Clock
- ② Zen Garden Lounge
- ③ Glass Cube Feature Wall
- ④ Piano and Lounge
- ⑤ Piano Bar
- ⑥ Main Entrance & Reception (2 desks)
- ⑦ BOH Area
- ⑧ Luggage Store

KEY PLAN



Interior Layout

LOBBY | PIANO BAR



Majestic



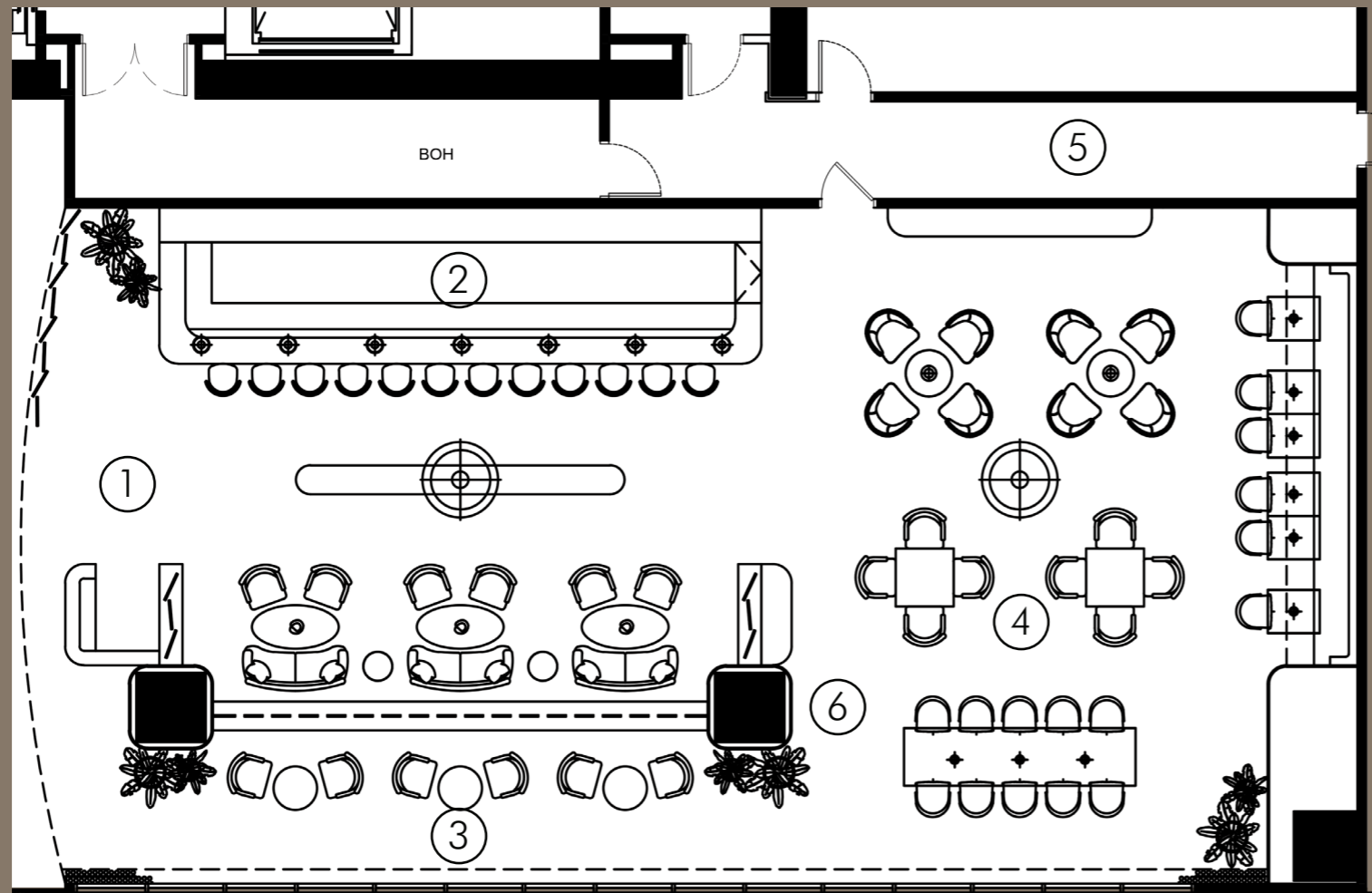
Library Bar

BESPOKE

TAILORED

TIMELESS

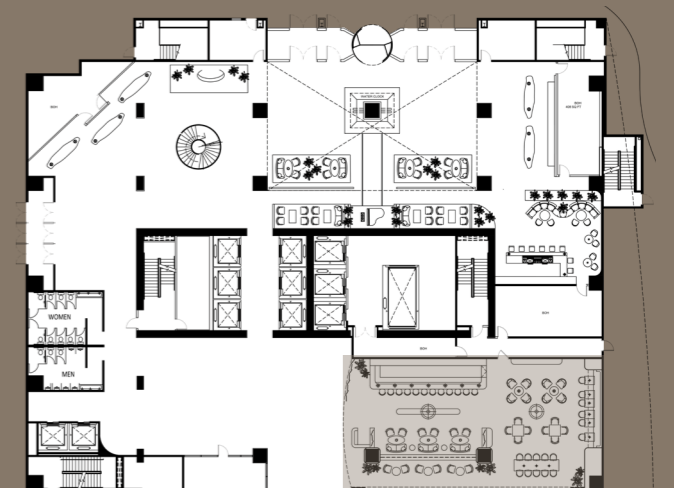
Majestic



KEY LEGEND

- ① Main Entrance and Hostess
- ② Library Feature Bar
- ③ Full Height Windows
- ④ Seating Areas
- ⑤ BOH Area
- ⑥ POS Station

KEY PLAN



Interior Layout

LIBRARY BAR

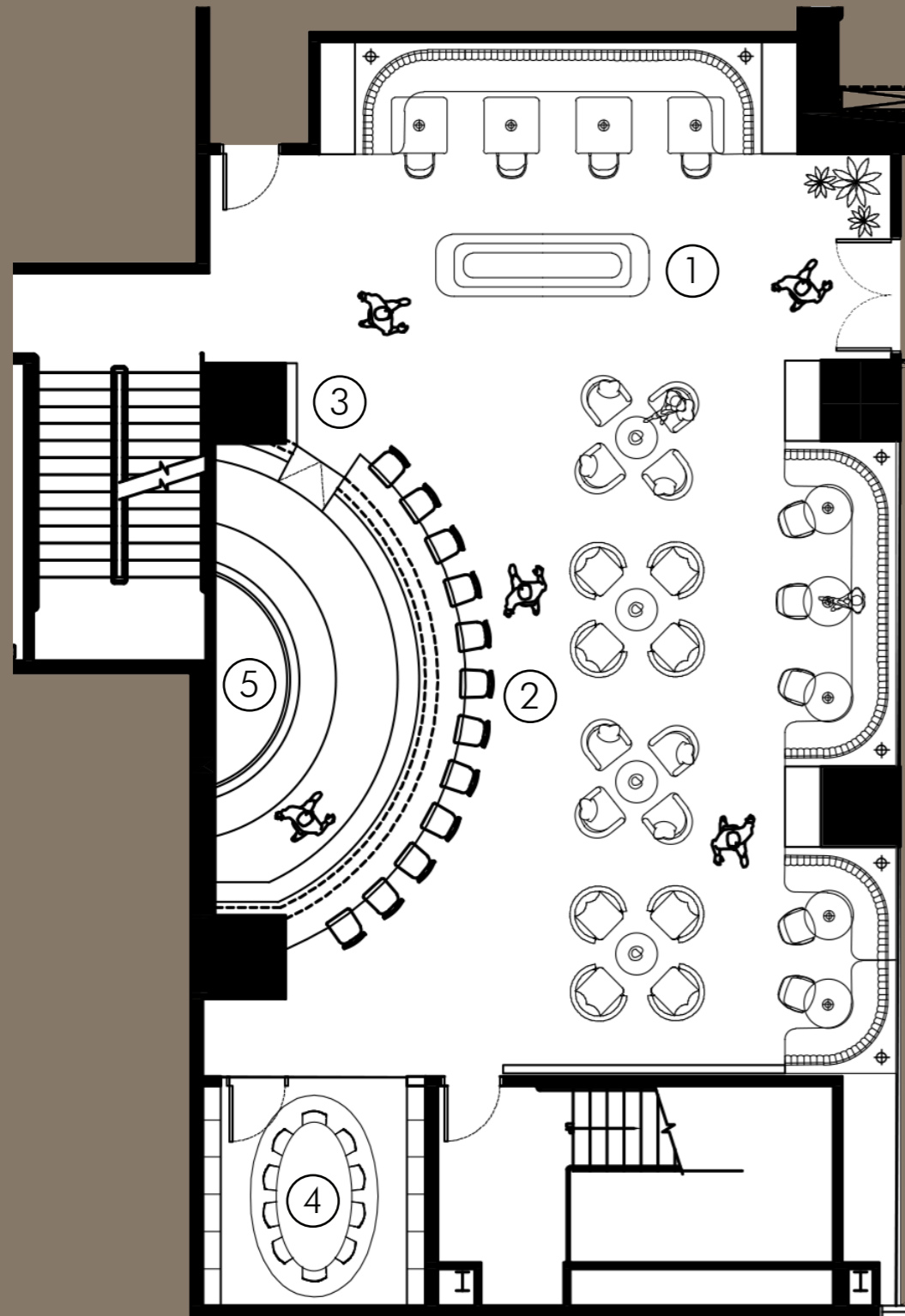


Majestic




La Concha
OYSTER BAR

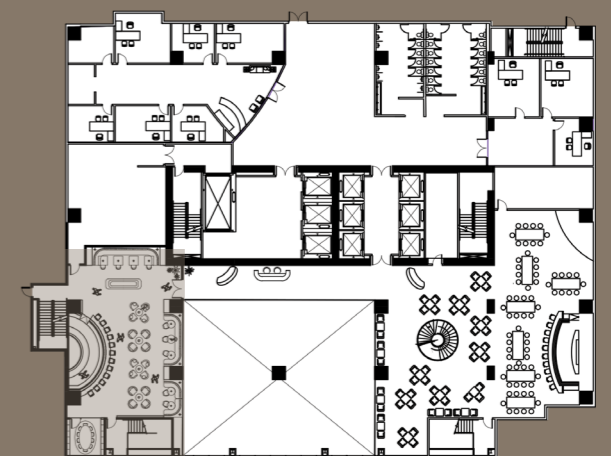
Majestic



KEY LEGEND

- ① Main Entrance and Sea Food Island
- ② Banquette Seating
- ③ Pearlescent Feature Wall
- ④ Private Dining Room
- ⑤ Curved Fish Tank

KEY PLAN



Interior Layout

LA CONCHA OYSTER BAR

Majestic





Fitness Center

BRIGHT

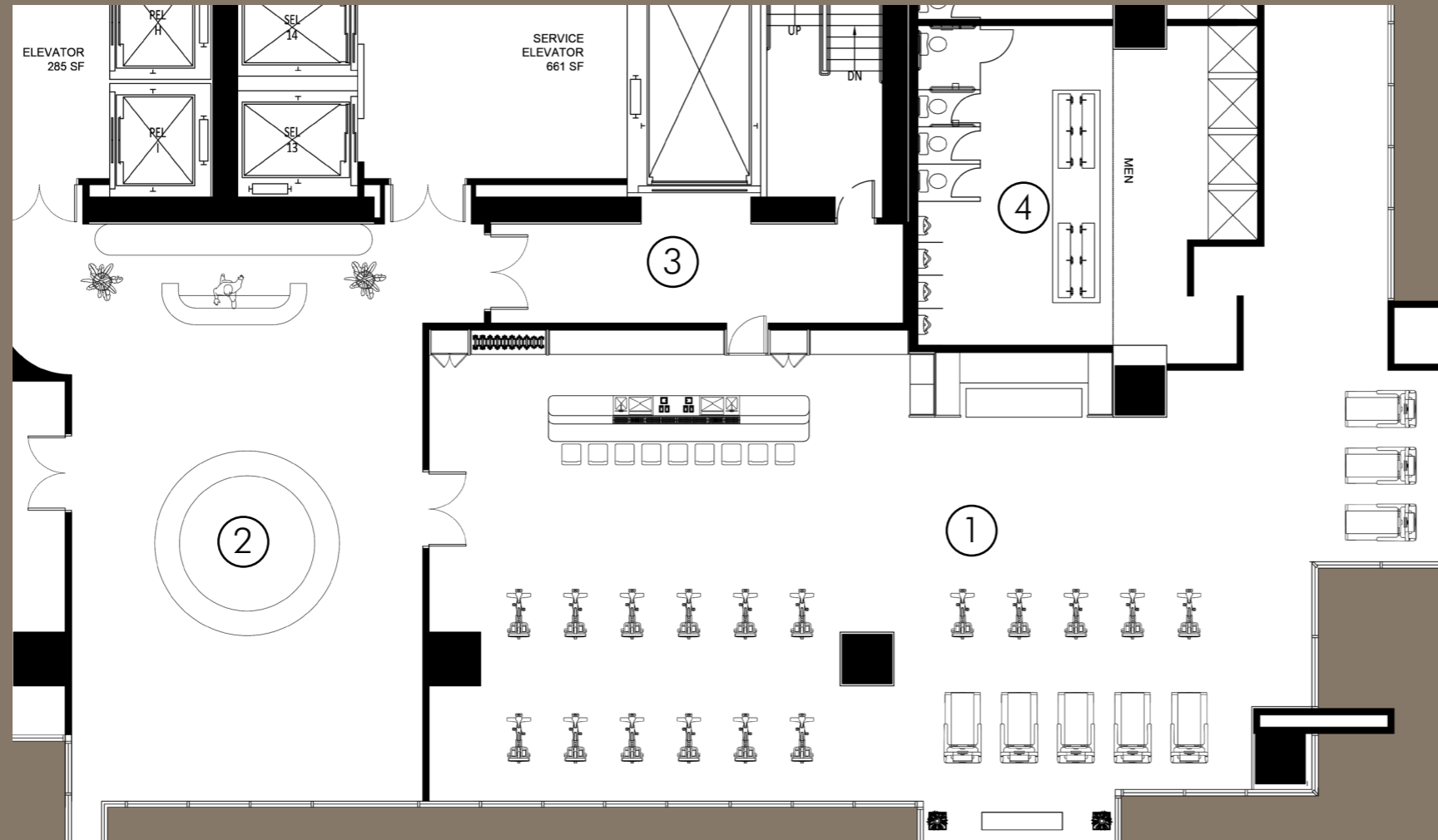
ENERGETIC

FRESH

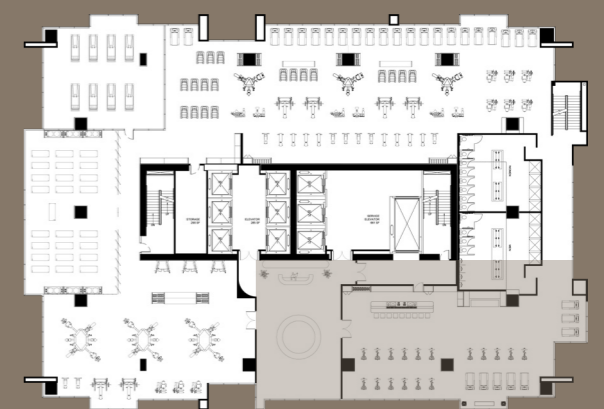
Majestic

KEY LEGEND

- ① Fitness Center
- ② Lobby
- ③ BOH
- ④ Restroom



KEY PLAN



Interior Layout

FITNESS CENTER



Majestic



Spa Reception

DESERT NEUTRALS

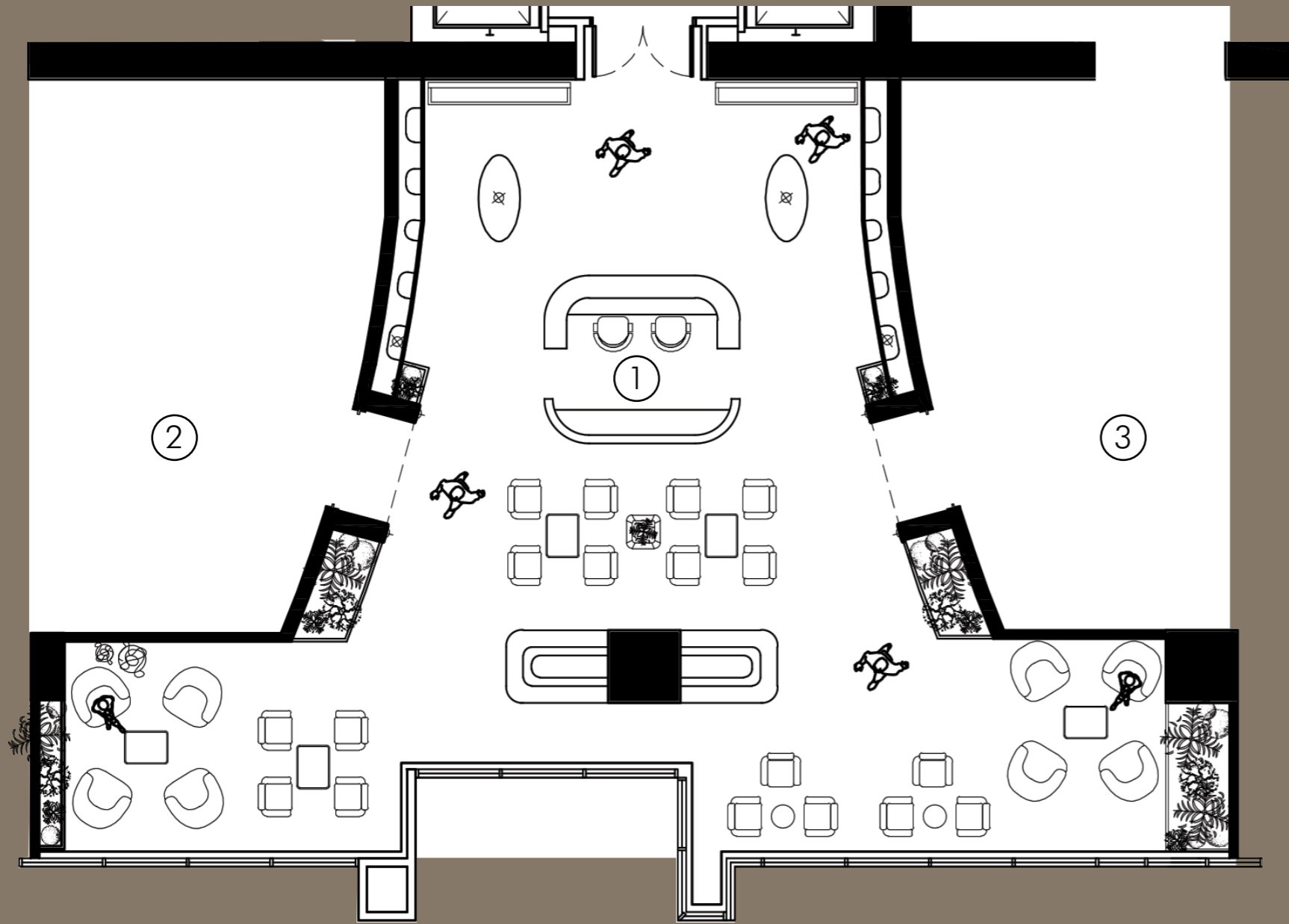
SOFT CURVES

NATURAL MATERIALS

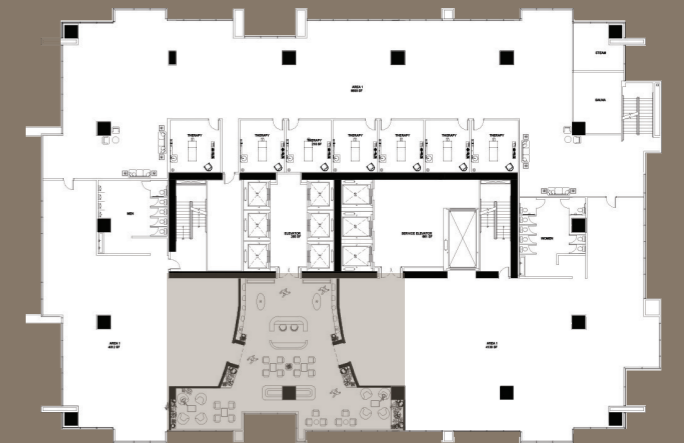
Majestic

KEY LEGEND

- ① Spa Reception
- ② Mens Space
- ③ Womens Space



KEY PLAN



Interior Layout

Spa Reception



Majestic



Hotel Guest Suite

LAYERED TEXTURES

DESERT NEUTRALS

REFINED DETAILS

Majestic



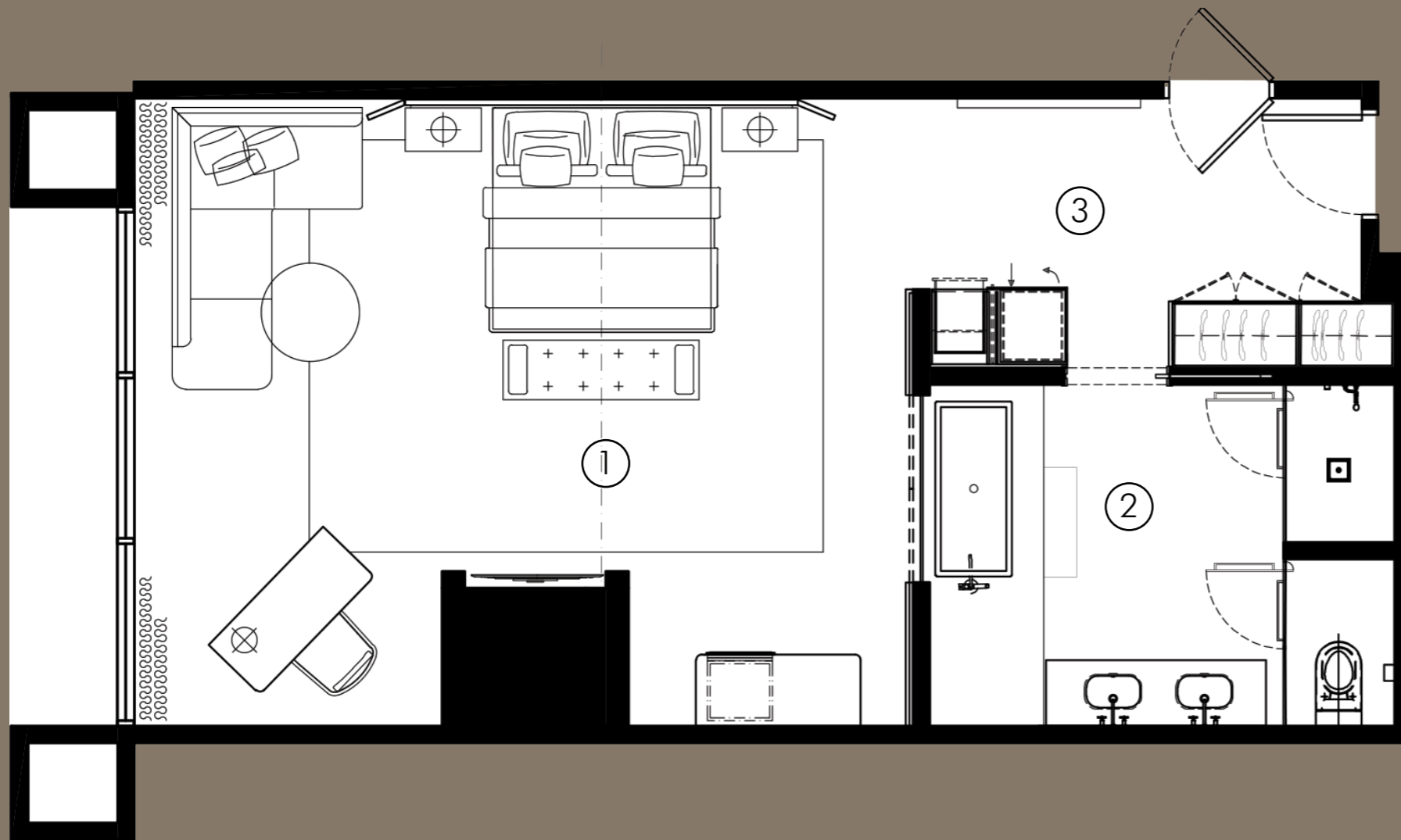
Hotel Guest Suite Bath

WARM

TEXTURED

DESERT TONED

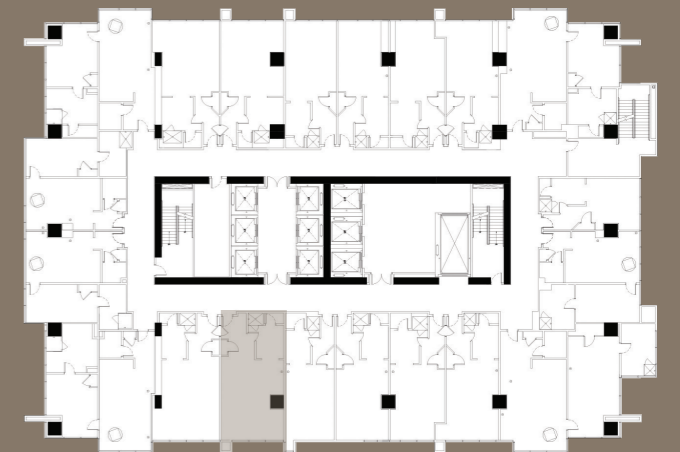
Majestic



KEY LEGEND

- ① Bedroom
- ② Bathroom
- ③ WIC / Corridor

KEY PLAN



Interior Layout

Hotel Guest Suite



Majestic



CEO Sky Suite: Entertainment Area

QUIET LUXURY

HIGH TECH

PANORAMIC

Majestic



CEO Sky Suite: Bedroom & Bath

UNDERSTATED

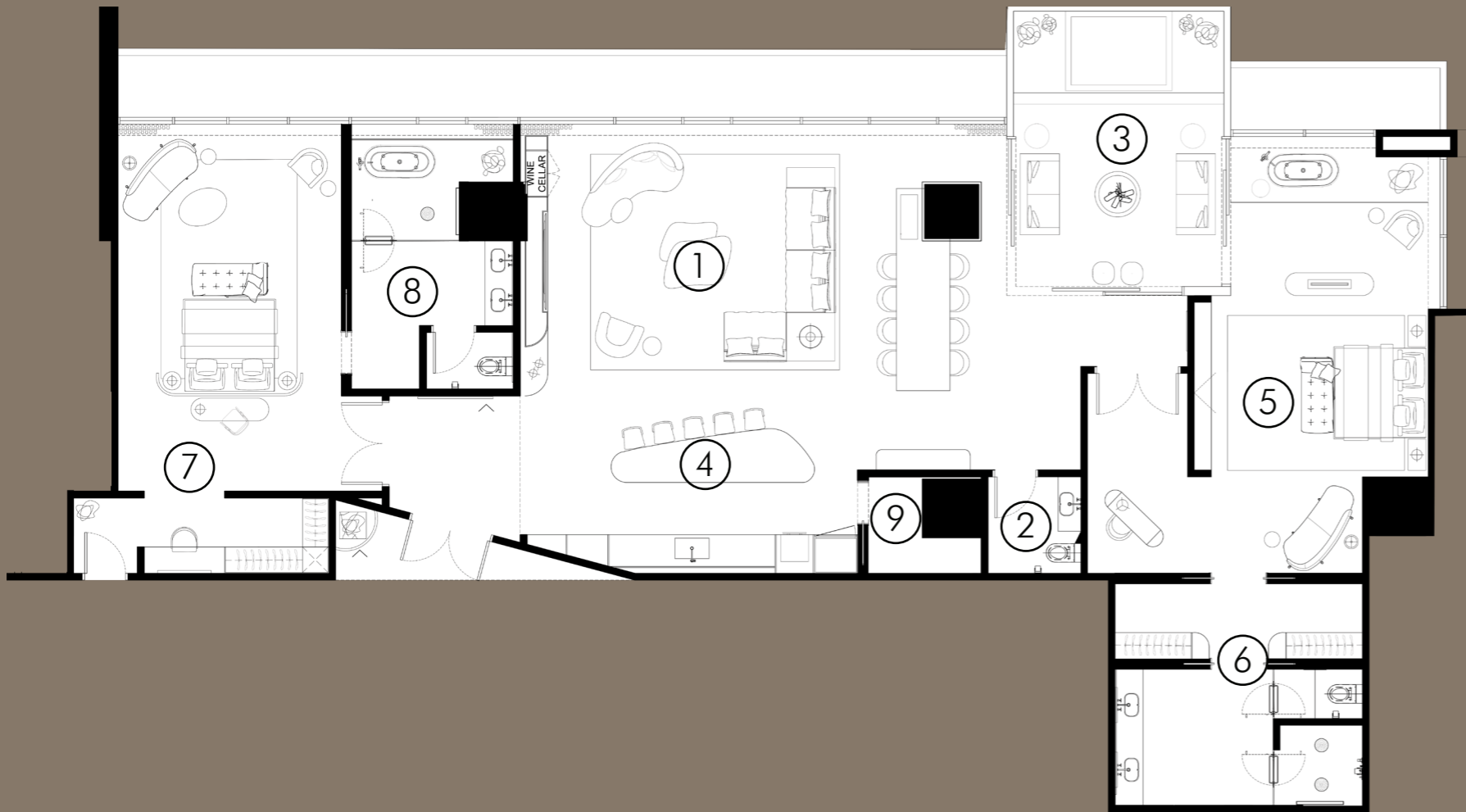
HIGH TECH

PANORAMIC

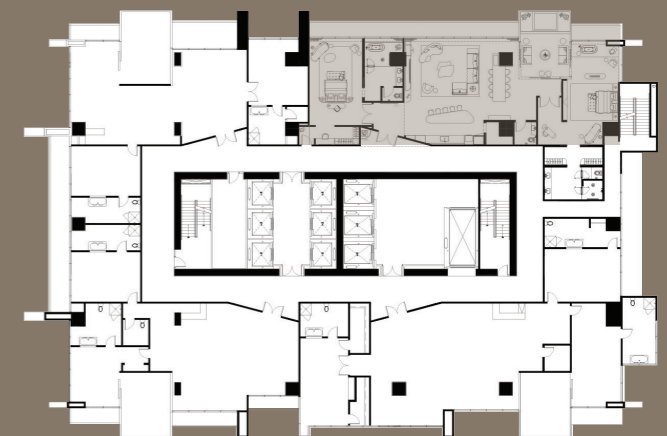
Majestic

KEY LEGEND

- ① Greatroom
- ② Powderroom
- ③ Plunge Pool
- ④ Kitchen
- ⑤ Bedroom & Bath
- ⑥ Bathroom Master & WIC
- ⑦ Bedroom & WIC
- ⑧ Bathroom
- ⑨ Pantry



KEY PLAN



Interior Layout

CEO Sky Suite: Entertainment Area

Majestic



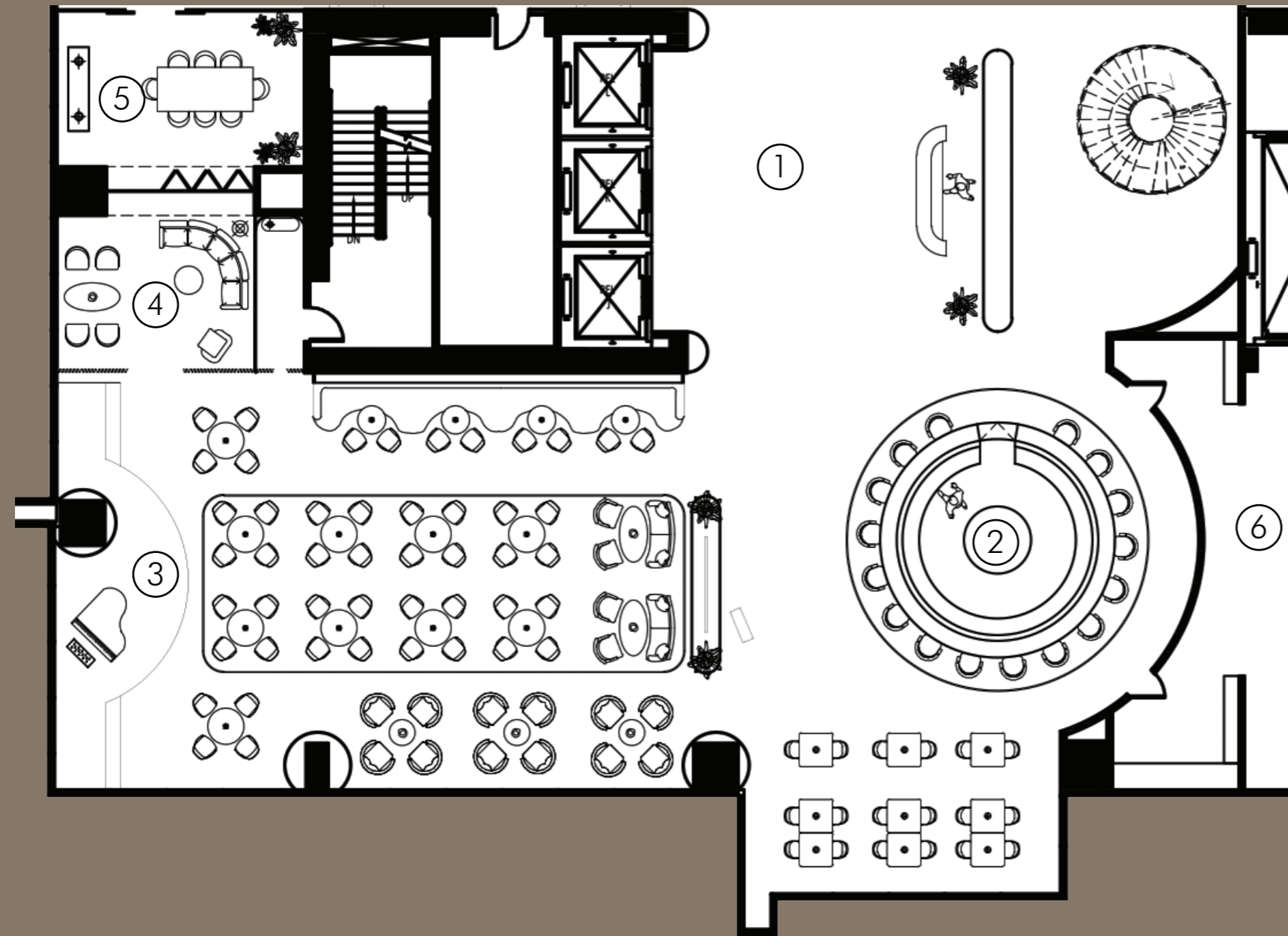
Club Heaven: Jazz Bar

LAYERED

RICH

TIMELESS

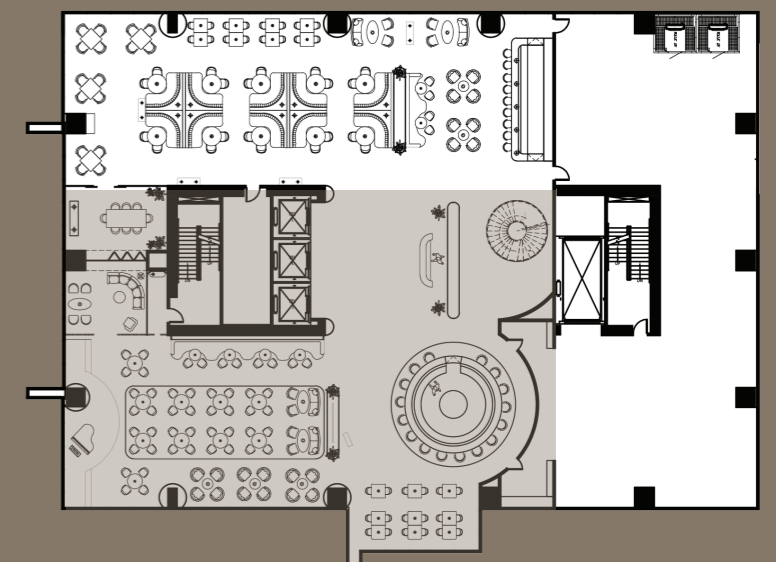
Majestic



KEY LEGEND

- ① Main Entrance and Hostess
- ② Bar
- ③ Stage
- ④ VIP Room
- ⑤ Private Dining
- ⑥ Kitchen

KEY PLAN



Interior Layout

Club Heaven: Jazz Bar



Majestic



Majesta

Majesta

Majesta

Majesta

